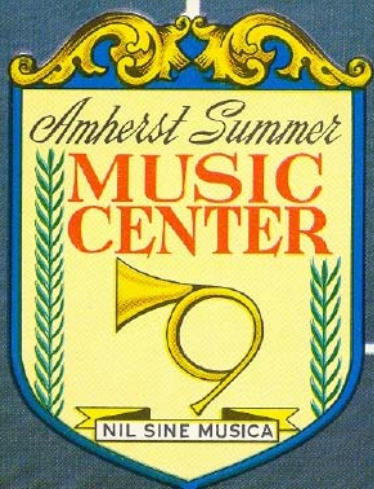


The AMHERST SUMMER MUSIC CENTER

IN THE BEAUTIFUL SEBAGO LAKE
REGION OF MAINE



... for talented young people
a vacation-with-music study
in the inspiring surroundings
of New England's most beautiful
music-school resort.



THE AMHERST SUMMER MUSIC CENTER was founded in 1957.

Dr. J. Clement Schuler, founder and director of the Center, has long felt that the young musician who is willing to devote most of the vacation period to music should not be required to put up with the usual inconveniences and discomforts of "camping" as well. The idea of a music camp, as such, was discarded. It was not until his explorations took him to Raymond, Maine, that he discovered and promptly purchased a handsome summer resort in the beautiful Sebago Lake country . . . now known as the **AMHERST SUMMER MUSIC CENTER**.

Sloping gently up from almost a quarter-mile of clean white sand beach are broad, lush lawns, clipped and tended, shaded by a variety of trees and cooled by the prevailing breeze off Panther Lake, part of the justly famed Sebago Lake chain. From the water's edge the property stretches back eighty-six acres through the clean, fragrant woods of natural park in which the village of student cottages is spread.

THE MUSIC VILLAGE

There are fifty of these cottages, imaginatively placed for outlook and appearance. They are built for adult comfort and convenience with hardwood floors, complete screening, comfortable mattresses and good beds. Roofed with insulating and fire-resistant material in bright color, they present a

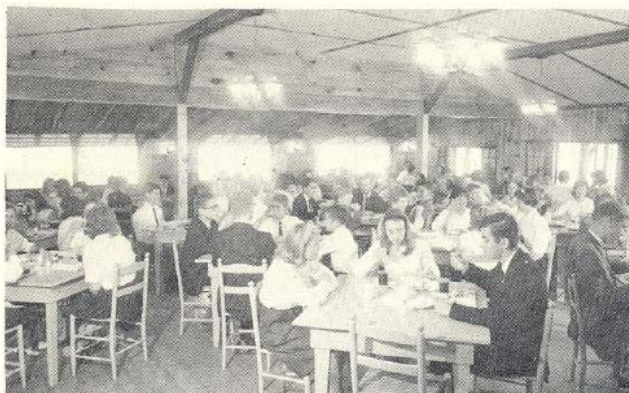
cheerful picture against the wooded background. Underground electrical systems avoid unsightly poles and wires and not only the Music Village but the entire forest area is kept free from underbrush and litter.

Most of the cottages are for two although a few accommodate as many as four to eight. Faculty cottages are so distributed as to permit the adequate—but almost never obvious—supervision that has been a mark of ASMC life from the start. At convenient locations throughout the living area are modern shower and private toilet facilities. The damp-free construction of the buildings assures proper care of instruments as well as contributing to comfort and health.

THE DINING HALL

With its broad windows opening full on the lake at its feet, the Dining Hall looks out on a panorama of inspiring beauty. The great room with its polished floors and rustic paneling is characteristic of the many famous Maine tea-rooms one encounters in the lake region—and is, in every way, as attractive. Here again is an accommodation designed and built for gracious adult living which serves so beautifully for our students' use.

There is ample room for all, with equally ample food of the best quality, prepared in a large, spotless, completely modern kitchen by professional cooks. The menus are varied, imaginative and intelligently balanced.



DINING HALL

THE LODGE

The large central building known as the Lodge is the site of much of the activity of The Center—both social and musical. Its large indoor area is used for concerts or recitals and provides an area for lectures, receptions and student meetings. Its broad, shaded verandas are a favorite place to meet and chat—or simply to sit and watch the ever-changing pattern of the lake and mountains.



THE LODGE

By the big double (back-to-back) fireplace there are areas for reading, writing, listening to quiet music or to gather in informal discussion with members of the staff.

In keeping with the quality and beauty of all the buildings, The Lodge is handsomely constructed of sturdy native timbers, natural paneling and shining hardwood flooring.

THE PLAYHOUSE

Here is another large building, beautiful and most useful. It was built and equipped for both work and play. The Playhouse is at once a splendid rehearsal or concert hall, a major classroom, a motion picture theater, and, when its great floor is cleared, our ballroom. Table tennis equipment will be found there along with a billiard table and indoor badminton.



PLAYHOUSE INTERIOR

HEALTH AND RECREATION

Physical welfare and abounding health are to be expected, of course, in an area such as this. Swimming, boating, canoeing, tennis—both on our splendid clay court and of the table variety—badminton, volley ball, shuffle board and hiking, provide a diversity of exercise. Special events and activities including trips, cookouts, barbecues, movies and dances, add their part to the recreation program. With direct and experienced adult supervision—from two able waterfront men to full time professional medical care—every provision has been made for safe and enjoyable summer living.

In case of minor illness such as a cold where isolated bed rest seems in order—or even when we feel that a student has become over-tired—there is a new ten bed Infirmary Building with complete first-aid equipment, nurse's quarters and five beds in each of the boys' and girls' wings. Additional medical care and hospital facilities are also near at hand.

IN THESE SURROUNDINGS MUSIC BECOMES A WAY OF LIFE

We have said much, to this point, about the area, the buildings and other facilities—nothing of music. This is because the location and physical aspects represent a very important part of the program and policies which have been so fruitful for the students of previous sessions. Perhaps this was best expressed by Dr. Schuler in answering a letter from a member of the Advisory Council:

"Your amusing reference to our wonderful Sebago establishment as a 'country club with music' touches on a point that I wish to impress seriously and firmly on both parents and prospective students. ASMC is a working facility for the young musician who is eager to attain greater experience in music and a broader understanding of musicianship. Naturally, I am warmly gratified with your own enthusiasm and that of many others—for our 'rustic luxury' as you

call it. I feel very strongly that our young people can better accomplish their aims in a comfortable and pleasant atmosphere. As we are selective in our choice of students, we are able to have a group deserving of this environment. It has been constantly reaffirmed over the past years, that this philosophy is a major factor in the successful accomplishments of our students."

THE SCHOOL

The New England area with its many colleges and preparatory schools is the permanent home of many of America's foremost music educators and—par-



CONCERT BAND

ticularly in Maine—the summer residence of many others. It is from this wealth of educators, conductors, clinicians and musicologists that we are able to select our personnel. In both the academic and applied fields of music, the Amherst Summer Music Center offers a broad choice of subjects presented by a distinguished and competent faculty.

Many of the instructors are, themselves, brilliant performers; but it should be emphasized that, in selecting our instructors, we have chosen **teachers** who are performers of note rather than **performers** who teach in part of their time. To any music educator, the difference is valid and important.

BASIC MUSICIANSHIP

While ASMC offers unusual opportunities for the study and performance of applied music through our band, orchestra and choral groups, we believe that basic musicianship cannot be discovered without basic study. For this reason, certain fundamental academic courses are required. Which of the courses to be taken will depend on the student's previous training in academic music as reported to us before the time of registration. In order to avoid our students' having to switch classes after the start because the work proves too elementary—or too advanced—we make a most careful study of the needs of the



ORCHESTRA

individual, based on a pre-registration questionnaire of studies completed, years studied and personal preferences.

From these questionnaires an actual schedule of classes, lectures and rehearsal periods can be developed so that the vital personal interviews on which we place much emphasis do not interrupt the settling down process but may be conducted at scheduled times later. Since this plan has been in operation we have found that a minimum number of adjustments in scheduling arise.



CHORUS

THE CURRICULUM—ACADEMIC MUSIC

In either their elementary or advanced divisions, at least two of these courses (unless previously studied) will be required of all students:

Theory	Sight Reading
Ear Training	Solfège

These additional courses, which are elective, will also be offered:

Harmony	Musical Form
History of Music	Music Analysis
Conducting	Arranging
Composition	

THE CURRICULUM—APPLIED MUSIC

The major performing groups at ASMC are The Orchestra, The Concert Band and The Chorus. Under the direction of nationally recognized educator-conductors, each of these organizations performs in a series of concerts to which all in the area are invited. They have been a notable success. In addition, the

(Continued)



students themselves have traditionally formed smaller instrumental and vocal groups. In this they have the full co-operation of the faculty and whatever assistance they request.

A large and well staffed Keyboard Department is also an important part of the applied music program at the Music Center. Individual instruction; piano seminars (at which the techniques of four-hands, two pianos, and solo performance are studied); combined with recital opportunities, complete an effectual Keyboard Department.

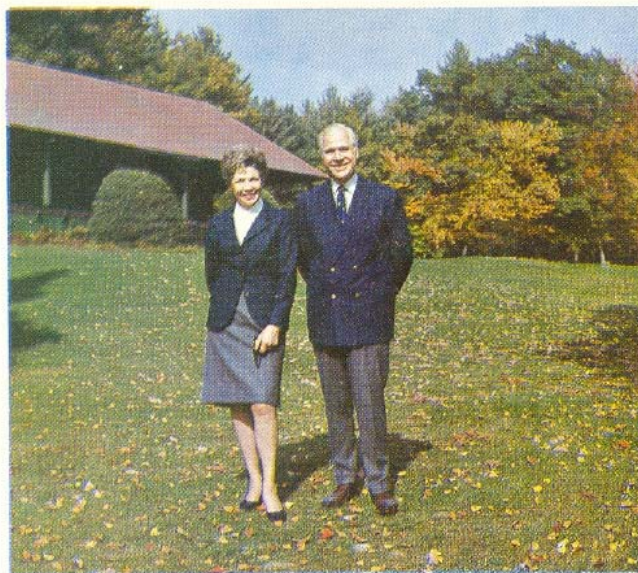
The Voice Department is designed to meet the needs of those students who wish concentrated training (from elementary to advanced level) in the field of vocal art. In conjunction with this department, opportunities to perform in the Opera Workshop are available to all voice majors.

It is an ASMC policy to expose its students to a great deal—and a great variety—of good music rather than limit them by repetitious and often sterile preparation for our weekly concerts. The caliber of our students is such that they need little more rehearsal than many adult groups and the public performances have always been of a high standard and enthusiastically received.

THE QUALIFICATIONS

The age and educational level at ASMC embraces the junior high and secondary school years. The student should be at least twelve years old and well adjusted to association with older groups. At least a year of instrumental or voice study is required—and more than that preferred since we have found that the beginner misses out on too much of the activity shared by the more able performers.

The ASMC student must be a good citizen and provide recommendations to that effect. During these memorable experiences in summer music, we try to treat every individual in as nearly an adult way as his experience and maturity permit. While faculty supervision is constant, direct faculty action is seldom necessary.



Dr. and Mrs. J. Clement Schuler

ASMC STANDS HIGH AMONG SUMMER MUSIC PROGRAMS

Founder and Director, Dr. J. Clement Schuler, is a nationally recognized educator, guest conductor, clinician and adjudicator who has been associated for more than twenty years with music education at the age levels to be found at The Center. On our Advisory Board are musicians and educators from almost every area of American music: Martina Driscoll, Arthur Fiedler, Fred Waring, Irving Cheyette, Robert Staffanson, Paul Yoder, Howard Mitchell, Robert Buggert and John Thornton. Every member of the faculty has been chosen for a demonstrated ability to disclose and develop musicianship at the ASMC age level. It is a policy at ASMC that the ratio of faculty to students be not less than one to ten.

DR. J. CLEMENT SCHULER FOUNDER AND DIRECTOR

Head of Music Department, Deerfield Academy, Deerfield, Mass. For eighteen years Director Instrumental Music, Amherst College. President, Amherst Music Press, Inc. Studied: New England Conservatory, Curtis Institute, University of Michigan, New York University and University of Milan, Italy. Former member Philadelphia Grand Opera Company; many performances with the Philadelphia Symphony Orchestra.

HOW TO APPLY

Simply write us directly for an application blank or, if you wish more information in detail, write for our 16-page booklet. There is no obligation, of course, in either case.